

Printable Fan Craft

Summer Pattern



CUT ALONG THE DOTTED LINE



FOLD ALONG THE SOLID LINE

Printable Fan Craft

Flower Pattern



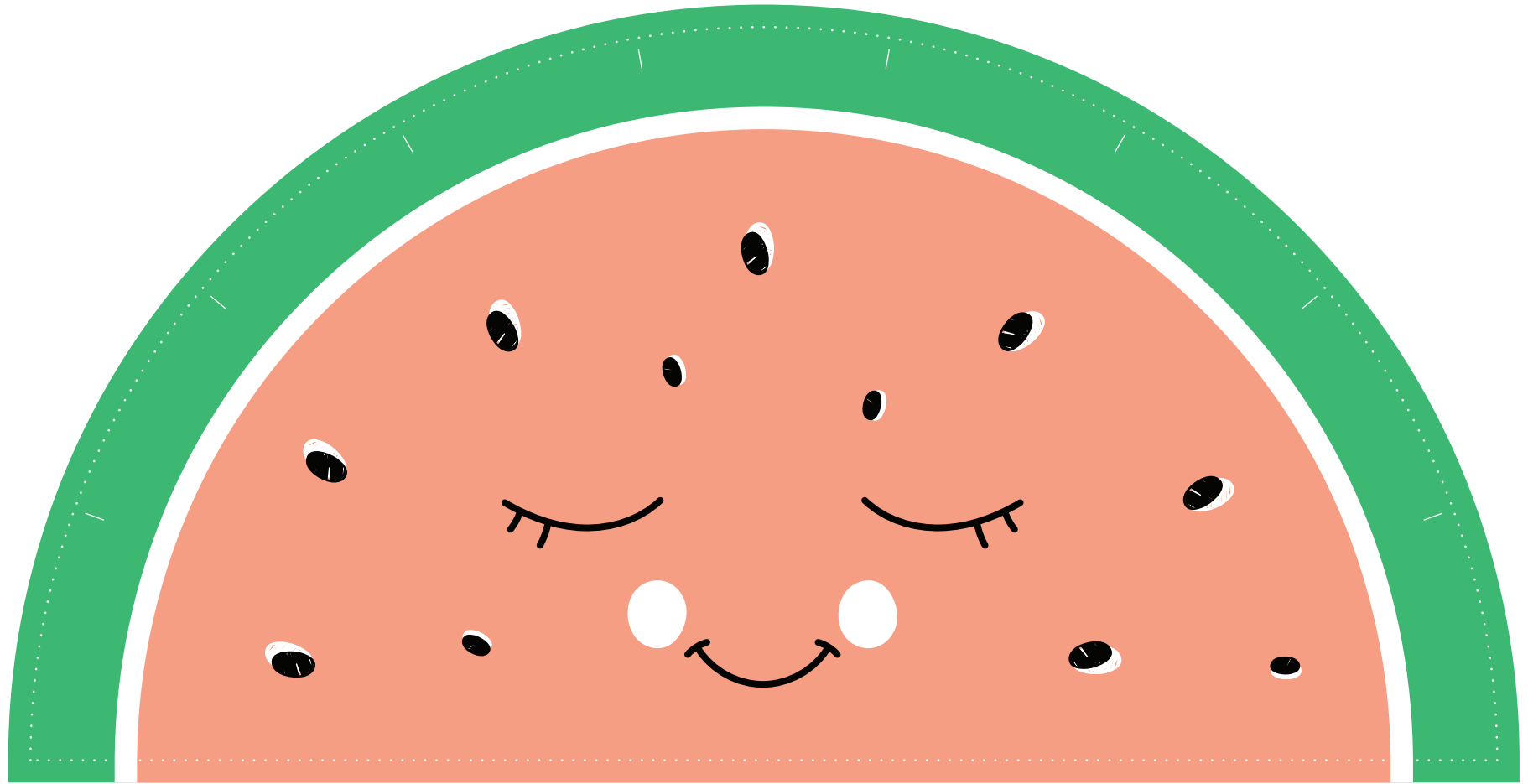
CUT ALONG THE DOTTED LINE



FOLD ALONG THE SOLID LINE

Printable Fan Craft

Watermelon Fan



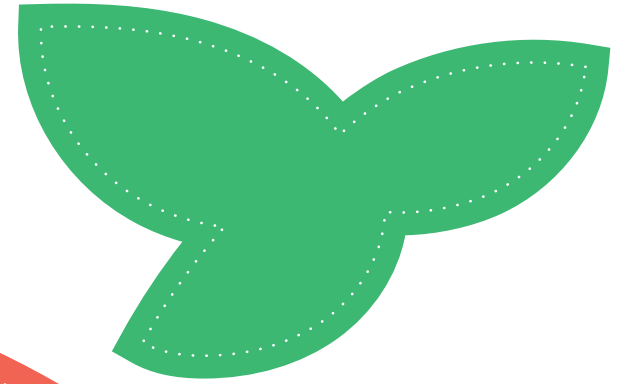
CUT ALONG THE DOTTED LINE



FOLD ALONG THE SOLID LINE

Printable Fan Craft

Strawberry Fan



CUT ALONG THE DOTTED LINE



FOLD ALONG THE SOLID LINE

Printable Fan Guide

Supplies:

1. Glue
2. Popsicle sticks
3. Scissors

Instructions:

1. Cut your chosen pattern along the dotted lines.
2. Starting on the shorter side, fold accordion style.
3. Glue both sides to a popsicle stick.
4. Glue the ends of the popsicle stick together.